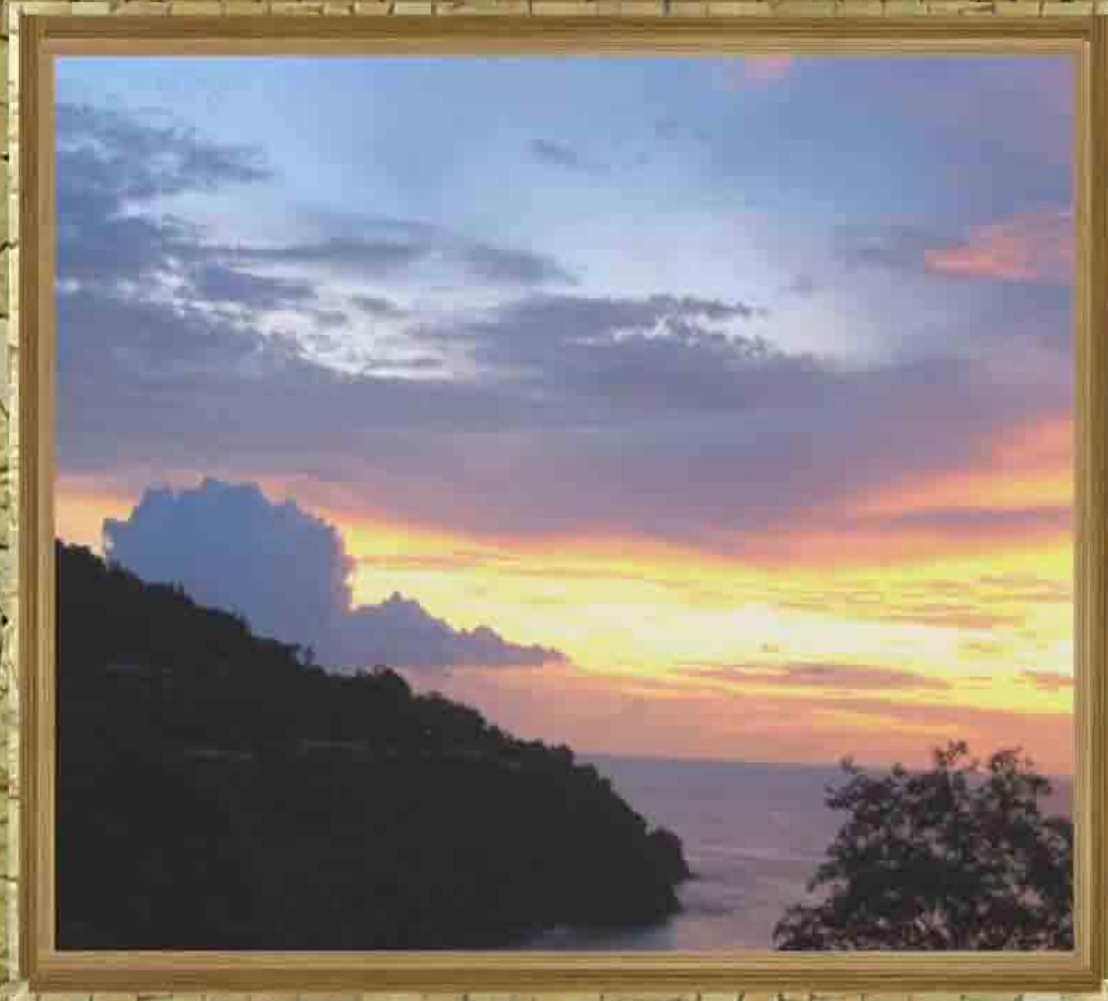


CARLOS GUDIÑO MARTINEZ ARCHITECT

ARCHITECT
COSTA RICA
CENTRAL AMERICA



CONTACT US
OUR SERVICES



Designs



Master Plans

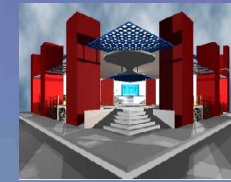
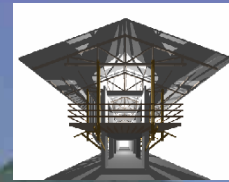


Constructions

*Designs in a marvelous tropical country
Costa Rica*

DESIGNS

These pictures are a prove of the quality and experience that I have in the design area ,first step I acquire the necessary knowledge and studies to create a global concept about the design and them I create a pre_design that satisfied any necessities that my client need o cover and then your dreams became true so you can chose any design and navigate one by one



CONDOMINIUMS

DIAMOND RESIDENCE

This astonishing house have a marvelous tropical and neo colonial style, it has different environments that became your needs in luxury comfort and living style, involve in a paradise country this design cover any activities that you need like five bedrooms , a master bedrooms with it own master bath and walk in closet , a employing room three additional baths, balconies with views to the ocean, a living room and dinning room are connected by a lovely views to stunning tropical gardens and a big terrace to take breakfast , a big kitchen with an island table that became your work more easier, in the first floor you have a some spaces to entertainment like a cinema or TV room and an special space to do exercise yoga o different entertainment activities. So if you have car, this home have a big garage join to the access with enough area to four cars , in addition you can add a pool or a tennis court.

AREA

4412 Sq feet

410 m²



[Previous](#)

[Main Page](#)

[Next](#)

DIAMOND RESIDENCE



AREA
4412 Sq feet
410 m²



[Previous](#)



[Main Page](#)



[Next](#)

SILVER HOME

This homelike house have a contemporaneous style, it has a different front view among others due to it has a huge glass facade that became your living in a exiting connection with the nature and landscape, in the middle of a tropical environment this home cover any necessity that you want, for example it has two bedrooms, a master bedrooms with a master bath and walk in closet, two additional baths, balconies with views to the ocean, a big terrace, a living room, a dinning room, a big kitchen with marble finishes and a laundry room. In the two levels that the construction has the spiral metal stairs generate a modern style and join any spaces with a flexibility that you ever imagine.

AREA

1400 Sq feet

130 m²



[Previous](#)

[Main Page](#)

[Next](#)

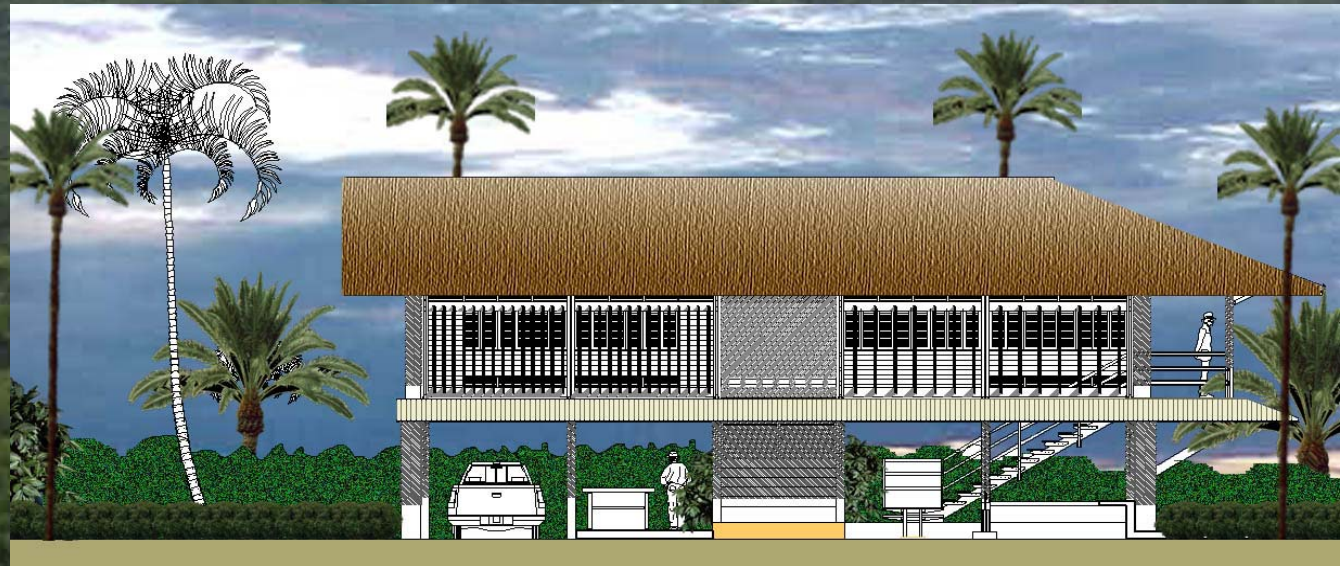
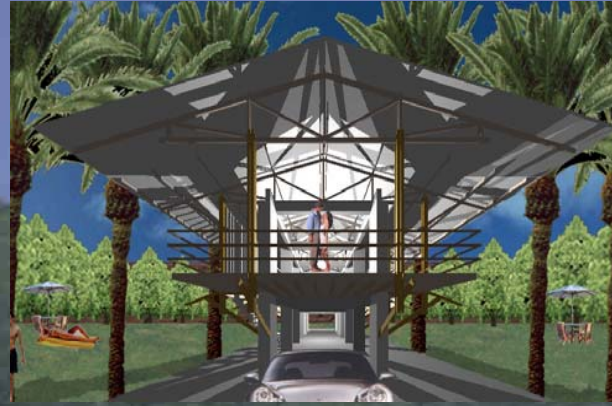
IVORY CHALET

Sun kissed balconies and wide open decks capture marvelous views and permit breezes to whisper through rooms all around this coastal cottage. Inspired in the Caribbean architecture this home has a highly functional floor plan that is engaged with the ocean views. In the second floor it has twin bedrooms, a bathroom a master bedrooms whit a big master bathroom, the design contemplate vertical wood pergolas that provide comfort and interesting shadows in the fresh homelike and indoor space. The principal structure will be by concrete and wood, the floor and ceiling will be wood too. This fresh home was specially design it to hot climate like beach living. The roof will be by shingles or straw, you can chose it.

AREA

2314 Sq feet

215 m²



[Previous](#)

[Main Page](#)

[Next](#)

EMERALD APARTMENTS



AREA

5380 Sq feet

500 m²



Previous



Main Page



Next

MAGIC
ISLAND
BAR AND
CASINO



AREA
9060 Sq feet
842 m²



Previous



Main Page



Next

MAGIC
ISLAND
BAR AND
CASINO



AREA
9060 Sq feet
842 m²



Previous



Main Page



Next

MAGIC
ISLAND
BAR AND
CASINO



AREA

9060 Sq feet
842 m²



Previous



Main Page



Next

OPAL HOME



AREA

2421 Sq feet
225 m²



Previous



Main Page



Next

TERRAN HOME



AREA
2960 Sq feet
275 m²



Previous



Main Page



Next

**GOLD
STYLE**



AREA
2529 Sq feet
235 m²



Previous



Main Page



Next

EXUBY HOME



AREA
3497 Sq feet
325 m²



Previous



Main Page



Next

AGATA HOME



AREA
2421 Sq feet
225 m²



Previous



Main Page



Next

SAN ANTONIO SHOPPING CENTER



AREA
5381 Sq feet
500 m²



Previous

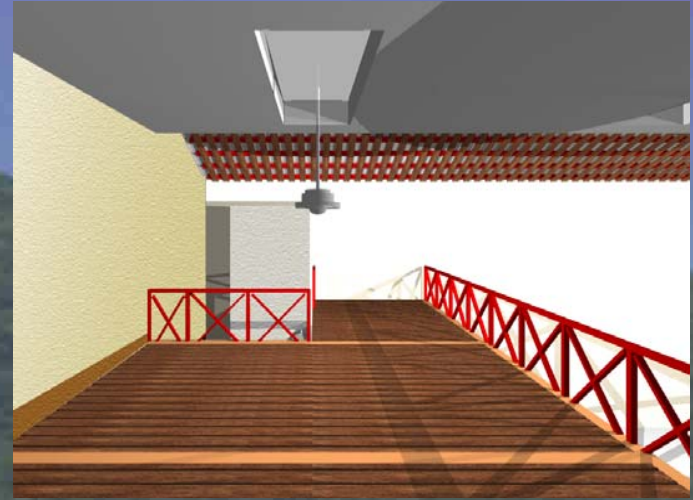


Main Page



Next

SAN ANTONIO SHOPPING CENTER



AREA
5381 Sq feet
500 m²



Previous



Main Page



Next

DICOM COMMERCIAL CENTER



AREA
5112 Sq feet
475 m²



Previous



Main Page



Next

TOWER HOME



AREA
3067 Sq feet
285 m²



Previous



Main Page



Next

BRONZE APARTMENT



AREA
2098 Sq feet
195 m²



Previous



Main Page



Next

AZURITA HOME



AREA

3497 Sq feet
325 m²



Previous



Main Page



Next

MARBLE HOME



AREA

3821 Sq feet
355 m²



Previous



Main Page



Next

TOURIST CITY

- CONDOMINIUM
- ENTERTAINMENT
- SHOPPING CENTER
- GYM AND SPA
- ARTS AND CRAFT
- CASINO
- GOLF FIELD
- AUDITORIUM AND BUSINESS CENTER

AREA

135356 Sq feet
12575 m²



Previous



Main Page



Next

FANTASY CASINO



AREA
8880 Sq feet
825 m²



Previous



Main Page



Next

COLONIAL MOUNT CONDOMINIUM



AREA
48437 Sq feet
4500 m²

[Previous](#)

[Main Page](#)

[Next](#)

LAS JOYAS
HERRADURA
ECOCONDOS



AREA
11452 Sq feet
1064 m²



Previous



Main Page



Next

TURQUOISE
CONDOMINIUM
TOWER



AREA

38158 Sq feet
3545 m²



Previous



Main Page



Next

MASTER PLANS

CONDOS
TOWN HOUSES
HOTELS
HOUSING
DEVELOPMENTS
COMMUNITIES

NOTE: THE ORIGINAL DESIGN WAS MADE BY COINSA IN GUANACASTE COSTA RICA WE COLABORATE WITH THE ILLUSTRATIONS AND THE PRESENTATION OF THESE MASTER PLANS



GUANACASTE, BAGACES



GUANACASTE, SARDINAL



Previous

Main Page

Next

PARADISE HOT SPRING

CONDOS TOWERS
HOTEL
AVENTURE PARK
VILLAGE
TOWN HOUSES

NOTE: THE ORIGINAL
DESIGN WAS MADE
BY COINSA IN
GUANACASTE
COSTA RICA
WE COLABORATE
WITH THE ILUSTRATIONS
AND THE PRESENTATION
OF THESE MASTER PLANS

**TOTAL AREA
53.4 HECTARES**



Previous

Main Page

Next

PARADISE HOT SPRING

PRIVATE HOSPITAL
PLASTIC SURGERY
TOWN HOUSES
SPA
LODGE AND RESORT

NOTE: THE ORIGINAL
DESIGN WAS MADE
BY COINSA IN
GUANACASTE
COSTA RICA
WE COLABORATE
WITH THE ILLUSTRATIONS
AND THE PRESENTATION
OF THESE MASTER PLANS

**TOTAL AREA
25 HECTARES**



Previous

Main Page

Next

SARDINAL DEVELOPMENT

CONDOMINIUM TOWERS
CLUB HOUSE AND LAKE
SPORT CENTER
COMMERCIAL CENTER
HOTEL
RESTAURANT

NOTE: THE ORIGINAL
DESIGN WAS MADE
BY COINSA IN
GUANACASTE
COSTA RICA
WE COLABORATE
WITH THE ILUSTRATIONS
AND THE PRESENTATION
OF THESE MASTER PLANS

**TOTAL AREA
3 HECTARES**



Previous

Main Page

Next

CONSTRUCTIONS



JIMENEZ HOME



FENIX HOME



NEVES HOME



MARBLE HOME



AGUILAR HOME



SILVA HOME



FERNADEZ HOME



VENECY HOME



Previous



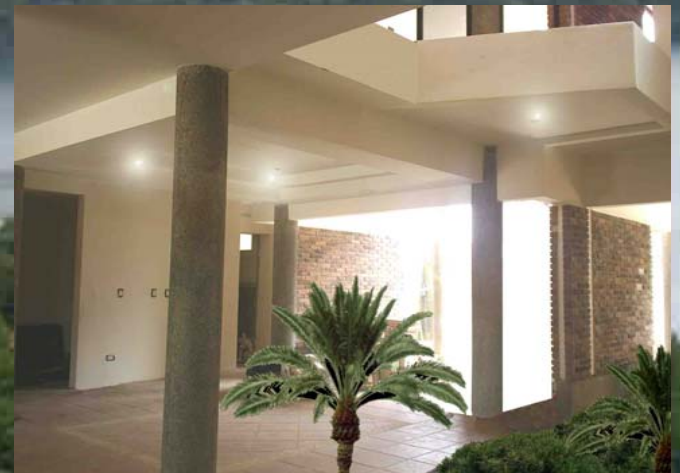
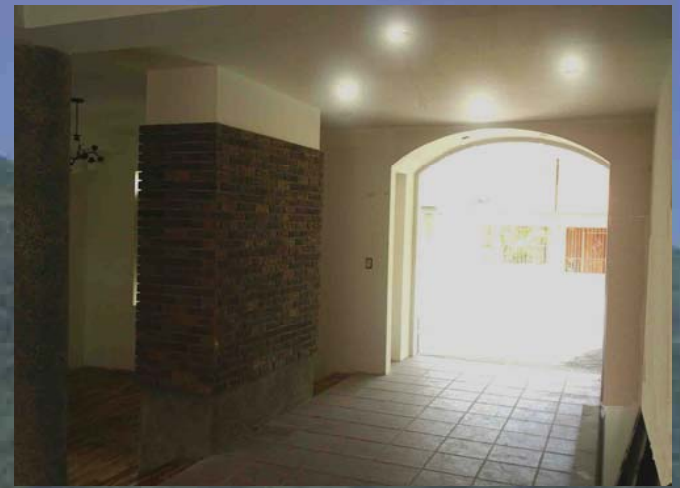
Main Page



Next

TERRAN HOME

AREA
2960 Sq feet
275 m²



Previous



Main Page



Next

TERRAN HOME

AREA
2960 Sq feet
275 m²



Previous

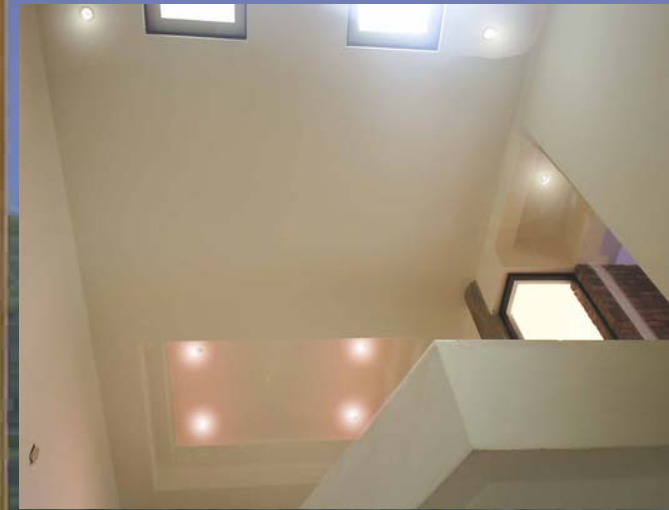


Main Page



Next

TERRAN HOME



AREA
2960 Sq feet
275 m²



Previous



Main Page



Next

TERRAN HOME

AREA
2960 Sq feet
275 m²



[Previous](#)

[Main Page](#)

[Next](#)

FENIX HOME



AREA
1506 Sq feet
140 m²



Previous



Main Page



Next

AZURITA HOME



AREA

3497 Sq feet
325 m²



[Previous](#)



[Main Page](#)



[Next](#)

AZURITA HOME



AREA

170 Sq feet

325 m²



[Previous](#)



[Main Page](#)



[Next](#)

MARBLE HOME



AREA

3819 Sq feet
355 m²



Previous



Main Page



Next

MARBLE HOME



AREA

3819 Sq feet
355 m²



Previous



Main Page



Next

BALBOA HOME



AREA
3768 Sq feet
350 m²



Previous



Main Page



Next

BALBOA HOME



AREA
3768 Sq feet
350 m²



[Previous](#)



[Main Page](#)



[Next](#)

BALBOA HOME



AREA
3768 Sq feet
350 m²



[Previous](#)



[Main Page](#)



[Next](#)

TERRACOT HOME



AREA
2421 Sq feet
225 m²



[Previous](#)



[Main Page](#)



[Next](#)

TERRACOT HOME



AREA
2421 Sq feet
225 m²



[Previous](#)



[Main Page](#)



[Next](#)

TERRACOT HOME



AREA
2421 Sq feet
225 m²



[Previous](#)



[Main Page](#)



[Next](#)

TERRACOT HOME



AREA
2421 Sq feet
225 m²



Previous



Main Page



Next

TERRACOT HOME



AREA
2421 Sq feet
225 m²



[Previous](#)



[Main Page](#)



[Next](#)

MOLINO
HOME



AREA
4305 Sq feet
400 m²



[Previous](#)



[Main Page](#)



[Next](#)

**MOLINO
HOME**



AREA
4305 Sq feet
400 m²



[Previous](#)



[Main Page](#)



[Next](#)

**MOLINO
HOME**



AREA
4305 Sq feet
400 m²



[Previous](#)



[Main Page](#)



[Next](#)

VENECY
HOME



AREA
4305 Sq feet
400 m²



[Previous](#)



[Main Page](#)



[Next](#)

**VENECY
HOME**



AREA
4305 Sq feet
400 m²



[Previous](#)



[Main Page](#)



[Next](#)

OUR SERVICES

- 1- MODERN DESIGN AND CONSTRUCTIONS MANAGEMENT.
- 2- TOURIST DESIGNS, HOTELS, CONDOMINIUM, APARTMENTS, ETC.
- 3- SHOPPING CENTER DESIGNS.
- 4- ARCHITECTURAL DESIGN MANAGEMENT.
- 5- MODELS CONSTRUCTIONS AND MARKETING.
- 6-ARCHITECTURAL CONSULTANT'S OFFICE.
- 7-DEVELOPMENT MANAGEMENT.
- 8-CONSTRUCTION VALUATION.

ARQ CARLOS GUDIÑO MARTINEZ
CFIA A 16153
carlosgm@escazu.or.cr

[Previous](#)

[Main Page](#)

[Next](#)



**CARLOS
GUDIÑO
MARTINEZ**

ARCHITECT

**LICENSE
A 16153**

**COSTA RICA
CENTRAL AMERICA**

Inicié mis estudios universitarios en la Universidad de Costa Rica; durante estos 5 años de estudio realicé muchos proyectos de diseño en sectores como Filadelfia de Guanacaste, Limón, San Carlos, Heredia y Puntarenas. Simultáneamente estudié en el Instituto Informático de Costa Rica en la especialidad de Técnico Avanzado en Mantenimiento de Computadoras.

Adquirí gran experiencia en diseño y presentación de proyectos, mi tesis basada en el diseño de una escuela de arquitectura lo demuestra, he trabajado en empresas de gran importancia como COINSA, ARTIV (Rolex), JASEC, CONSTRIAL, XILO HOMES, entre otras.

He desarrollado un gran potencial en ejecución de proyectos con personalidad de liderazgo, poseo conocimientos avanzados del idioma inglés, domino el software AUTOCAD y MINICAD VECTOR WORKS (líderes mundiales en diseño asistido por computadora).

Mi carne de arquitecto es A-16153.

CEL 83 90 22 52 / 83 15 60 58

TEL / FAX 25 53 02 79

E-mail : carlosgm@escazu.or.cr